



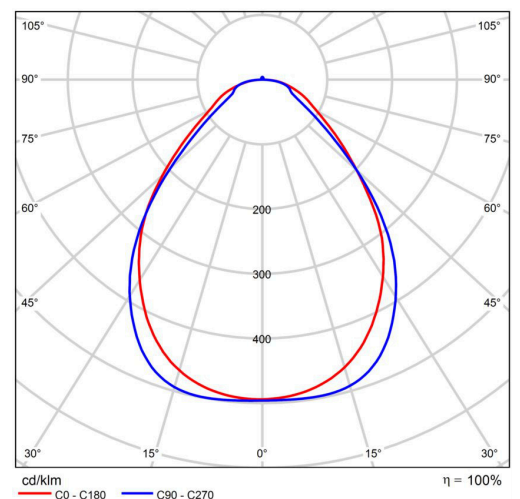
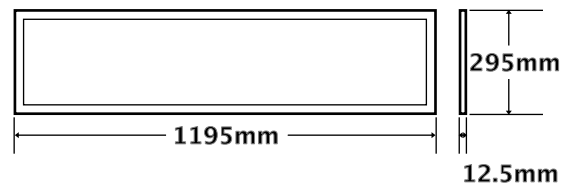
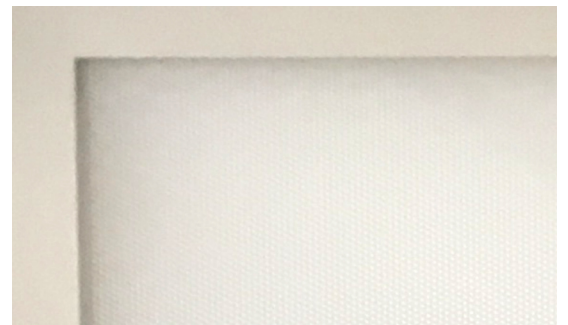
30W SIDE-LIT LED PANEL LIGHT

BMP-SL312-30-1204-58



SPECIFICATIONS

System Power	30W
Milliamps	800Ma 36v
LED type	PCB Board, 192pcs, 4014 SMD
Lamp Body Material	Aluminium Shell & PMMA LGP
Colour Temperature	4000K
Luminous Flux	3,590lm
Luminous Efficacy	120lm/w
MaCadam	3 step
CRI	>80
Beam Angle	120 x 120
Rated Lifespan	>50,000 hours
IP Rating	IP20
Driver Type	BOKE External Flicker Free
Operating Temperature	-20 ~ 40°C
Dimmable	Optional Flicker Free
Dali Dimmable	Tridonic (Optional)
Installation	Recessed / Suspended
Lamp Dimension	1195 x 295 x 12.5 mm
Warranty	5 years
Certification	JAS/ANZ





30W SIDE-LIT LED PANEL LIGHT

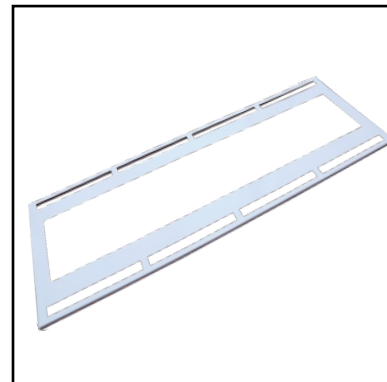
BMP-SL312-30-1204-58

For accessories, contact BMP LED via
www.bmp-led.com.au/contact

ACCESSORIES



Surface Mount frame
Matt White
BMP-SL312-SURF-58



Air Slot recessed Frame
Matt White
BMP-SL312-AS-58



Plaster Recess Frame
Matt White
BMP-SL312-REC-58



Cleanroom IP65 Enclosure
Matt White
BMP-SL312-IP65CR-58

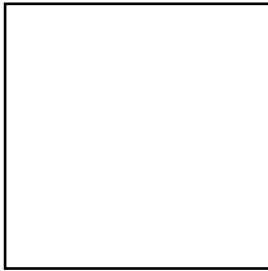


30W SIDE-LIT LED PANEL LIGHT

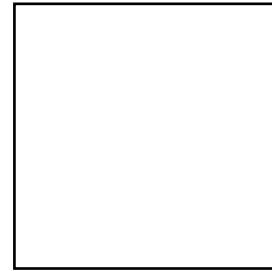
BMP-SL312-30-1204-58

For accessories, contact BMP LED via
www.bmp-led.com.au/contact

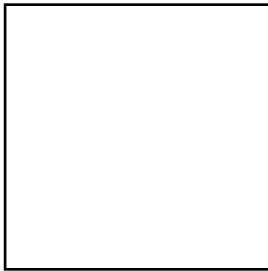
ACCESSORIES



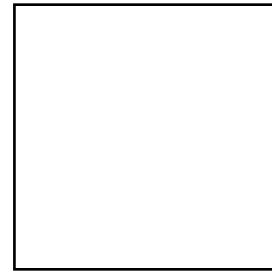
XXXX



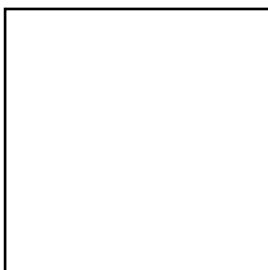
XXXX



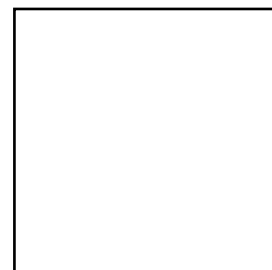
XXXX



XXXX



XXXX



XXXX