



20W SLIM WEATHERSEALED BATTEN LIGHT

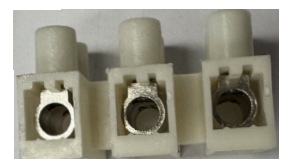
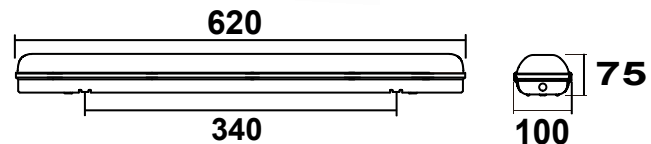
4000K

BMP-SWS6-20-1404-17

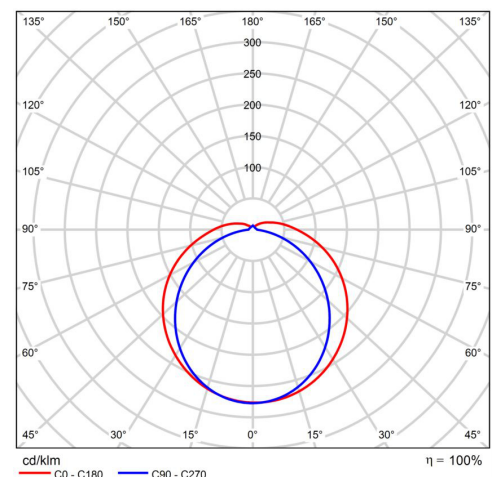


SPECIFICATIONS

System Power	20w
Milliamps	350Ma
LED type	2835 SMD
Lamp Body Material	PC Base and PC Cover
Colour Temperature	4000k (3000k,5700k (opt)
Luminous Flux	2,800 Lumens
Luminous Efficacy	140 Lm/w
CRI	Ra80 (Ra80/90 optional)
Beam Angle	120 120
Rated Lifespan	>50,000 hours
IP Rating	IP65 Housing
Impact rating	IK10
Driver Type	Isolated Class 1 Flicker free
Operating Temperature	-20°C ~ 50°C
Dimmable	Optional
Test Reports	LM80, LM70
Lamp Dimension	600 x 95 x 75 (H) mm
Net Weight	3.2kg
Warranty	5 years driver
Certification	JAS/ANZ TUV



PA16H Large terminal Block



120x120⁰ B/Angle