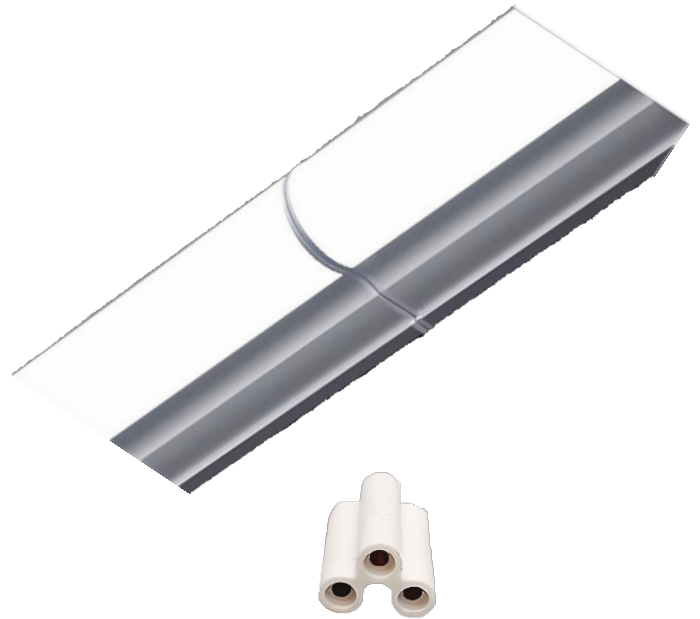




600 SERIES INTERGRATED TUBE LIGHT

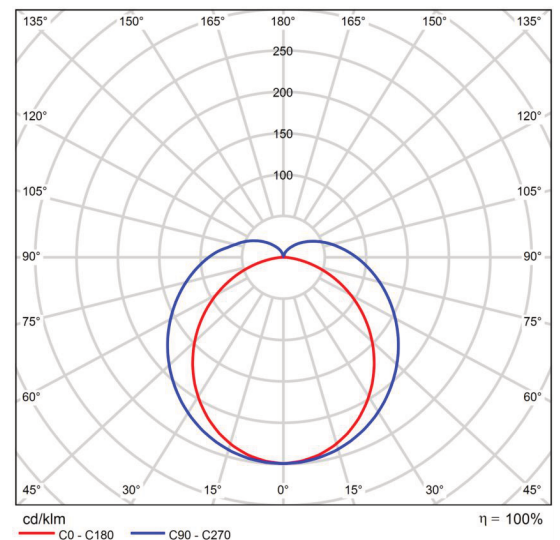
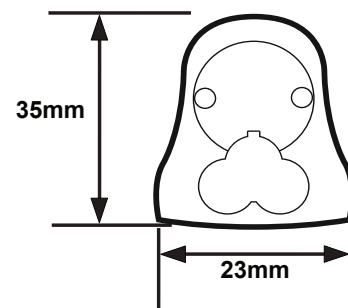
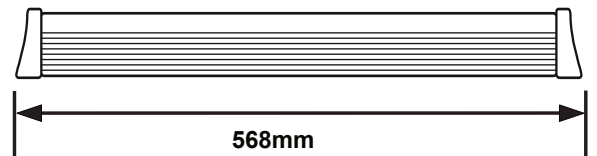
6000K

BMP-TUBINTP6-9-1206-65



SPECIFICATIONS

System Power	9w
Milliamps	220Ma
LED type	2835 SMD
Lamp Body Material	PC milky diffuser, 0.8mm aluminium housing
Colour Temperature	6000K
Luminous Flux	1,080 Lumens
Luminous Efficacy	120 Lm/w
CRI	Ra80 >
Beam Angle	115 x 115
Rated Lifespan	>30,000 hours
IP Rating	IP44 Housing
Impact rating	IK08
Driver Type	Built in Driver
Operating Temperature	-20°C ~ 55°C
Dimmable	N/A
Test Reports	Lm80 > 50,000hrs
Lamp Dimension	568 x 23 x 35 (H) mm
Net Weight	
Warranty	3 years
Certification	JAS/ANZ TUV



110x100 B/Angle

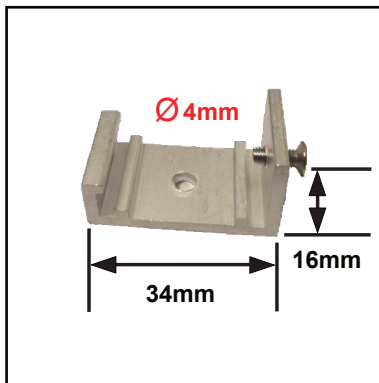


600 SERIES INTERGRATED TUBE LIGHT

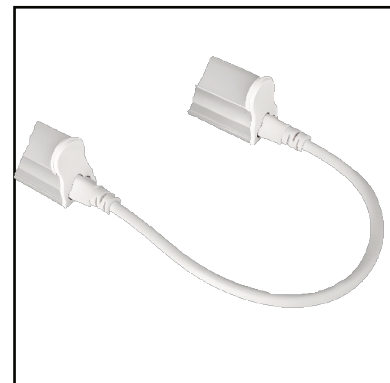
BMP-TUBINTP6-9-1206-65

For accessories, contact BMP LED via
www.bmpled.com.au/contact

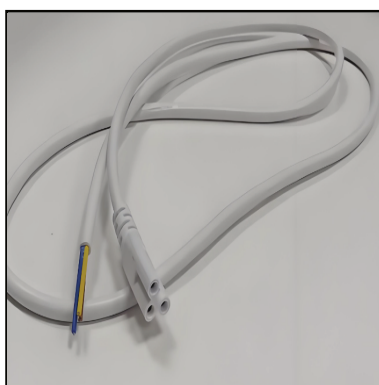
ACCESSORIES



Aluminium mounting clip
BMP-TUBCLIP-65



Interconnecting Cable
0.45m
BMP-TUBINT-TUBCON-65



Intergrated tube AC cable
1.0m
BMP-TUBINT-1.0M-ACCABLE-65